



from 850 mm up to 1050 mm  
↑  
now also  
height-  
adjustable  
↓  
electro-hydraulic



# GrossPath GP-1500

Special Worktable  
with active-carbon  
air recirculation system

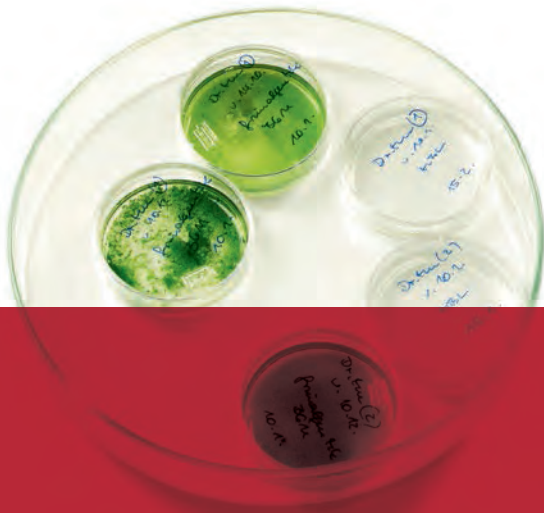
## Plug in and work!

**GrossPath** – the special worktable designed to ensure a pollution-free, laboratory-grade working environment for slicing and preparing histological slide preparations. Its compact design makes the **GrossPath Special Worktable** the perfect laboratory equipment, especially for small facilities.

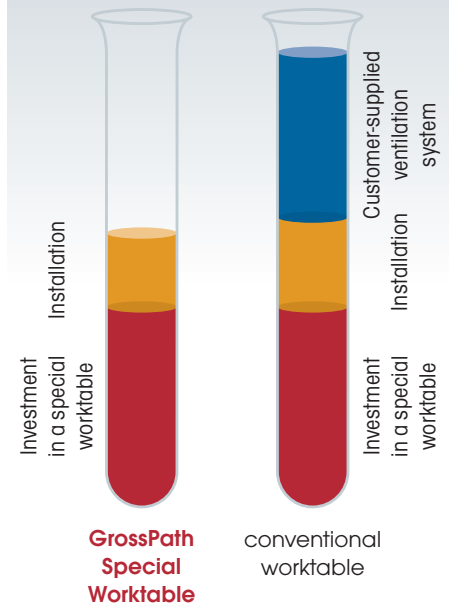
As a product of our **ECOline** range, this worktable has been designed with a special view to conserving energy and resources – while delivering outstanding extraction results.

**Buy it, set it up and power it on:** thanks to its generously proportioned **active-carbon air recirculation system**, the **GrossPath Special Worktable** is ready for immediate use – no need for installing a costly separate air ventilation system! The air is suction-extracted off the entire work surface from top to bottom – for optimized removal of any health-hazardous vapors. Formalin concentrations will even be significantly below the maximum allowable concentrations (MAC) throughout the entire extraction zone.

Long service life guaranteed thanks to the **GrossPath's** large-sized special active-carbon filter – for significant savings in operating costs. Filters can be replaced with ease and comfort through a large inspection hatch in the table's understructure.

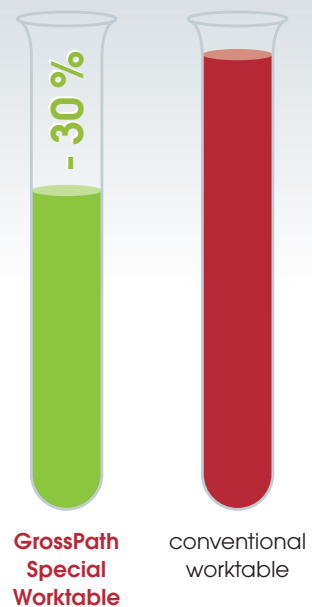


### Investment costs

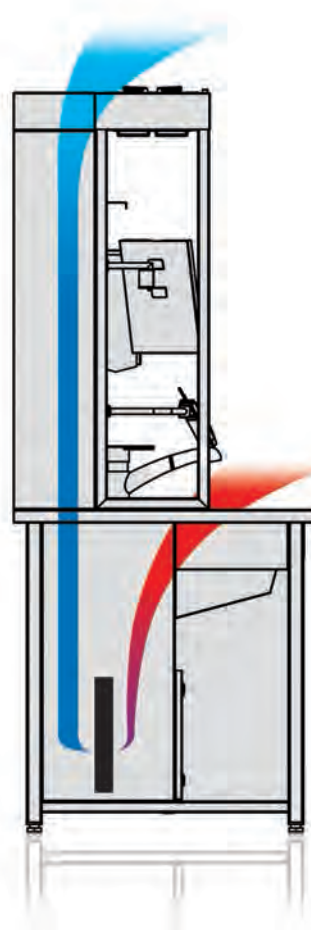
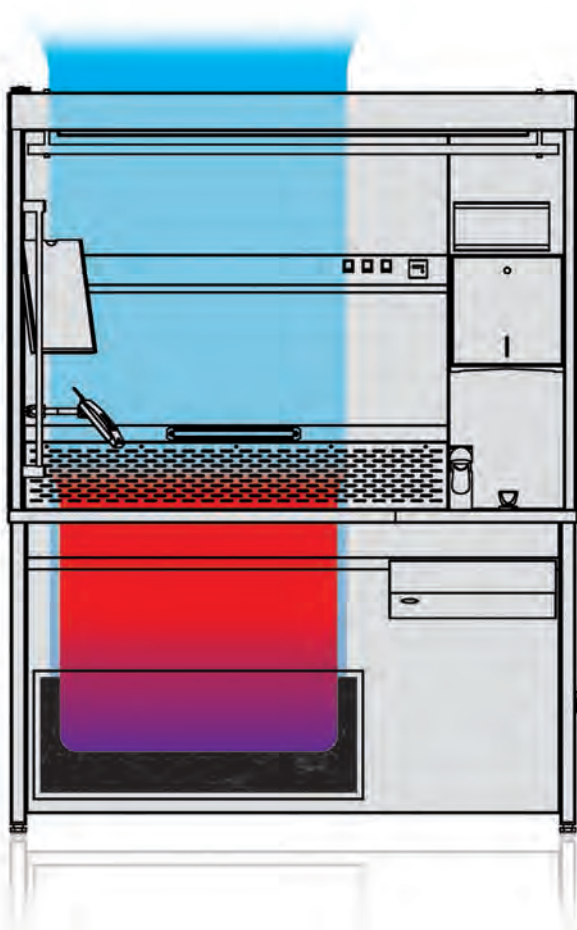


The investment costs involved in the installation of a customer-supplied ventilation system are significantly higher than the costs required for a stand-alone solution.

### Operating costs



Significant reduction in operating costs of up to 30% by obviating the need for conditioning outside air supply.



3 The purified air is blown out through the air duct

1 The contaminated air is drawn in by a high-performance extraction fan

2 The drawn-in air is purified by an active-carbon filter

### Technical advantages and details of the GrossPath GP-1500 Special Worktable:

- Dual workstation with extra-large work surface
- Structure made entirely of highly-polished stainless steel (material code no. 1.4301 – ANSI 304)
- Stationary lighting assembly providing „daylight quality“ conditions (approx. 5000° K) – for direct shooting without need of additional flashlight
- 230-Volt dual socket integrated in the lighting assembly
- Solid, self-supporting understructure with adjustable legs
- Lateral rod system for accommodating document holders or Dictaphone brackets (optional\*)
- Railing system for easy installation of a variety of holders or brackets e.g. camera tripod or magnifying glass with embedded light (optional\*)
- Seamlessly welded 370 x 370 x 150 mm sink
- Mixer tap with pull-out rinsing hose
- Extra-sturdy perforated metal sheet inserts (approx. 10 mm below rim level), D17, T60 perforation
- Integrated exhaust-air connection with volume flow control
- Air velocity at the perforated metal sheet inserts: 0,4 m/sec min.
- Integrated sprinkler system installed underneath the perforated metal sheet inserts, including regulating valve
- Formalin drain with strainer screen insert
- Exhaust air duct blowing from bottom to top
- **New:** optional electro-hydraulic height adjustable from 850 mm to 1050 mm

*\*Not included in the standard scope of delivery.*

# Our UCS Grossing Tables at a Glance



# Accessories for Grossing Tables



Camera holder mounted to the railing system KA-H-400  
Art. No. 060.015.085



Magnifier with illumination mounted to the railing system LL-WM72-RS  
Art. No. 060.016.065



Flexible microphone holder mounted to the railing system FHH-RS-500  
Art. No. 060.015.035



Flexible microphone holder laterally mounted to the side rails FHH-SS-300  
Art. No. 060.015.036



Swivelling document holder laterally mounted to the side rails DH-A4-SS  
Art. No. 060.012.031



Flexible iPad/tablet holder laterally mounted to the side rails FH-TABLET-SS-300  
Art. No. 060.022.036



Swivelling scanner holder laterally mounted to the side rails FH-SCAN-SS-300  
Art. No. 060.100.105



Swivelling dictaphone holder SH-SS-PH 730  
Art. No. 060.020.041



Formalin-dispensing system FDS-05/1-F  
Art. No. 060.012.024

# Accessories for Grossing Tables



Waste shaft with extraction and stainless steel waste bin  
MÜ-AS-150-M  
Art. No. 060.012.056



Waste shaft with extraction and PVC waste bin MÜ-AS-150-M-K  
Art. No. 060.012.057



Glove holder made of stainless steel HHK  
Art. No. 060.020.074

Paper dispenser made of stainless steel K 300  
Art. No. 020.012.075



Monitor holder MT-SS laterally mounted to the side rails  
Art. No. 060.022.033



Keyboard holder THB-SS laterally mounted to the side rails  
Art. Nr. 060.022.080



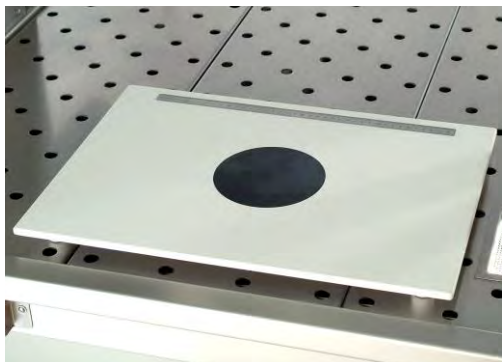
Centimeter scale etched into a grossing table LIN-UCS  
Art. No. 060.012.076



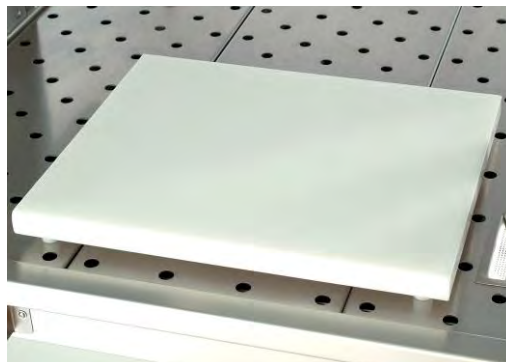
Magnetic bar for instruments mounted to the storage board MS-300  
Art. No. 060.012.077

Magnetic bar for instruments mounted to the illumination (BEA) MS-300-BEA  
Art. No. 060.112.077

# Accessories for Grossing Tables



Cutting board made of Corian with a round black point  
SB-CO-50/40-SE  
Art. No. 060.012.012



Cutting board made of polyethylene SB-PE-50/40  
Art. No. 060.012.010



Camera holder mounted to the railing system with monitor and keyboard holder laterally mounted to the side rails suitable for the *PathLite Compact* camera system consisting of camera for glare-free gross imaging and suitable computer and monitor with preinstalled *VividPath* software.



Cable channel installed around the entire illumination of a grossing table. USB and LAN ports separately available upon request.

- Width cable channel 1,500 mm KK-BEA-1500 – Art. No. 060.018.120
- Width cable channel 1,750 mm KK-BEA-1750 – Art. No. 060.018.122
- Width cable channel 2,000 mm KK-BEA-2000 – Art. No. 060.018.124

# Accessories for Grossing Tables



HEPA filter system mounted on top of the GrossPath GP-1500 (only available for GrossPathsl) HEPA-GP-1500  
Art. No. 060.260.070



Flexible splash guard mounted to the railing system FSS-500  
Art. No. 069.300.248



The fully automatic formalin mixing and dispensing station AFMDS-100 is designed for contact-free dilution of concentrated formalin in laboratories. Thanks to its compact design, the mixing station is also suitable for small laboratories. The integrated microprocessor within the device allows you to easily control all operations, such as mixing a 3.7% standard solution, through one single surface at the control panel with LCD display. Additionally, it is possible to prepare a customized mixture by using variable quantities of formalin, purified water and a buffer liquid. The prepared mixture can be drained directly from a tap at the device or transferred to multiple remote stations that are up to 200 meters away.  
Art. Nr. 099.900.196

**Tek Equipment™**

Ph: 1300 368 138

[www.tekequipment.com.au](http://www.tekequipment.com.au)

[info@tekequipment.com.au](mailto:info@tekequipment.com.au)

**TekMed NZ™**

Ph: 0800 456 217

[info@tekmed.co.nz](mailto:info@tekmed.co.nz)

[www.tekmed.co.nz](http://www.tekmed.co.nz)

**KUGEL medical GmbH & Co. KG**  
Hermann-Köhl-Straße 2 A  
DE – 93049 Regensburg  
GERMANY

Phone +49 (0) 9 41/20 86 48-0  
Fax +49 (0) 9 41/20 86 48-29  
E-Mail [info@KUGEL-medical.de](mailto:info@KUGEL-medical.de)  
[www.KUGEL-medical.de](http://www.KUGEL-medical.de)

**KUGEL**  
medical  
■ ■ ■ ■