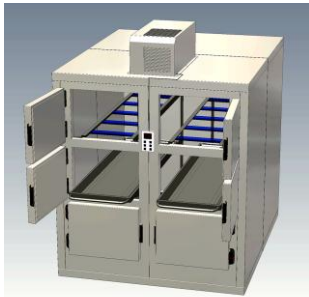


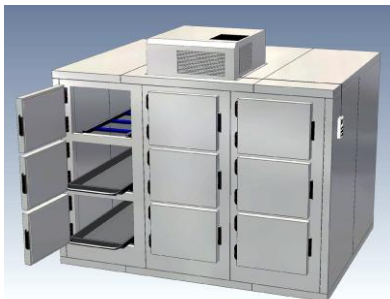
Morgue refrigeration unit with small hatches 3-levels KZM 40/0300 – KZM 40/01500



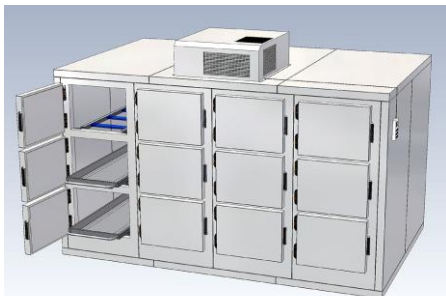
Morgue refrigeration unit KZM 40/0300
To storage 3 body trays in 3 levels
3 hatches 680 x 500 mm
Made of 80 mm CFC -free polyurethane rigid
Foam, coated outside steel
Dimensions W/D/H: 1210 x 2260 x 2260 mm
Article No.: 040.040.010.



Morgue refrigeration unit KZM 40/0600-3
To storage 6 body trays in 3 levels
6 hatches 680 x 500 mm
Made of 80 mm CFC -free polyurethane rigid
Foam, coated outside steel
Dimensions W/D/H: 1910 x 2260 x 2260 mm
Article No.: 040.040.020



Morgue refrigeration unit KZM 40/0900
To storage 9 body trays in 3 levels
9 hatches 680 x 500 mm
Made of 80 mm CFC -free polyurethane rigid
Foam, coated outside steel
Dimensions W/D/H: 2960 x 2260 x 2260 mm
Article No.: 040.040.030



Morgue refrigeration unit KZM 40/01200
To storage 12 body trays in 3 levels
12 hatches 680 x 500 mm
Made of 80 mm CFC -free polyurethane rigid
Foam, coated outside steel
Dimensions W/D/H: 3660 x 2260 x 2260 mm
Article No.: 040.040.040

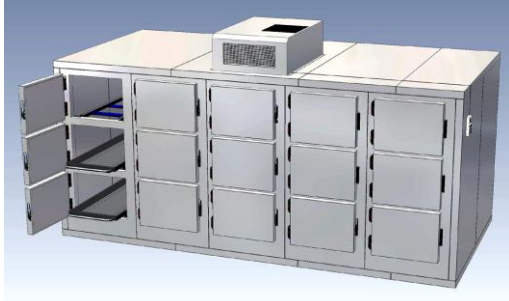
KUGEL medical GmbH & Co. KG
Hermann-Köhl-Str. 2A
DE - 93049 Regensburg / Germany

Phone +49/941/208648-0
Fax +49/941/208648-29
www.KUGEL-medical.de



KUGEL
medical
■ ■ ■ ■

Morgue refrigeration unit with small hatches 3-levels KZM 40/0300 – KZM 40/01500



Morgue refrigeration unit KZM 40/01500
To storage 15 body trays in 3 levels
15 hatches 680 x 500 mm
Made of 80 mm CFC - free polyurethane rigid
Foam, coated outside steel
Dimensions W/D/H: 4535 x 2260 x 2260 mm
Article No.: 040.040.050

Accessoires:

limited opening made of stainless steel with rubber buffer
opening angle: approx. 120 degree
Article No.: 040.081.020



TekEquipment™

Ph: 1300 368 138

www.tekequipment.com.au

info@tekequipment.com.au

TekMed NZ™

Ph: 0800 456 217

info@tekmed.co.nz

www.tekmed.co.nz

KUGEL medical GmbH & Co. KG
Hermann-Köhl-Str. 2A
DE - 93049 Regensburg / Germany

Phone +49/941/208648-0
Fax +49/941/208648-29
www.KUGEL-medical.de



KUGEL
medical
■ ■ ■ ■